

ENGLISH

# MDA

---

*“Make a Dream of Actuality”*



[www.mda.asia](http://www.mda.asia)

*Make a Dream of Actuality*



## CONTENT

MDA FOR 2021

CEO Greeting

History

Organization

Development / Vietnam's Economy

S&G / KC&S / GIANG BIEN / MDA LAOS

Major Performance of Development

Construction / Certificate

MDA E&C / MBICO

Major Performance of Construction

MDA E&C 3-years Performance (2018~2020)

“

Welcome to MDA  
continues to challenge for leading Asia

”

**Welcome to MDA**

## **CEO GREETING**

### **Welcome to MDA!**



We will be an innovative leader pioneering the Asian market with new challenges.

First of all, we are truly grateful for your generous support to MDA.

MDA has striven to become a company that contributes to national development based on three founding principles : 'sincerity', 'loyalty' and 'creation'.

Thanks to the trust of our customers, we have established ourselves as a company that continues to challenge, grow and realize our dreams despite the rapidly changing global business environment.

We ask for your continued interest and support.

Thank you.

**“ Make a  
Dream of  
Actuality ”**

CEO

Song In Soo

A handwritten signature in blue ink, consisting of stylized, overlapping characters that appear to be 'S', 'I', and 'S'.



Recently, MDA has been making forward progress, fueled by Vietnam's economic growth.

In addition to contributing to the development of Vietnam's economic development and construction industry.



# HISTORY

Starting with the entry into Vietnam in 2007, MDA has continued to expand business areas from real estate development projects such as development of multiple and industrial complexes and residential and commercial facilities to comprehensive construction projects such as civil engineering, architecture and landscape, and continues to take strides toward becoming a 100-year-old company.

MDA will actively adopt Digital Twin and BIM design techniques to secure our future competitiveness and actively explore new markets such as Southeast Asia and the Middle East.

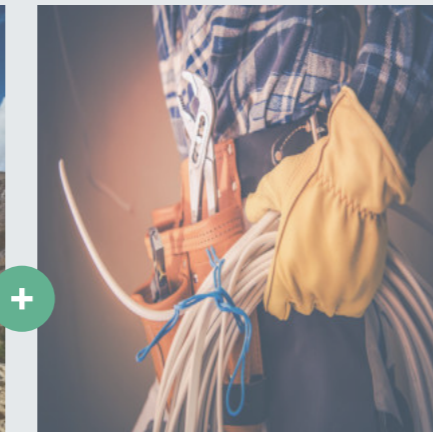
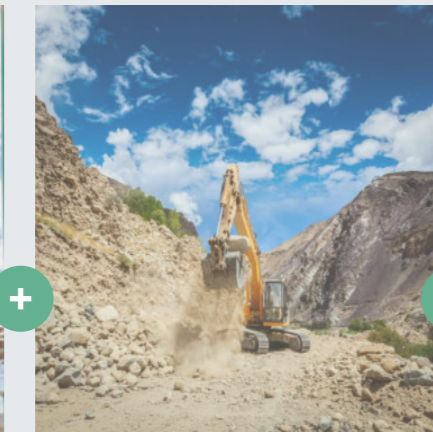
**MDA promises to grow as an innovative company trusted by customers through efforts to foster talent and strengthen expertise.**

- 2006.03.30 • Established MDA construction
- 2006.05.22 • Acquired earthwork license
- 2006.10.25 • Registered patent (Self-assembly wood retaining wall)
- 2007.02.01 • Open Hanoi office in Vietnam
- 2007.02.30 • Open Ho Chi Minh office in Vietnam
- 2007.04.20 • Registered trading business license (Korea International Trade Association)
- 2007.04.30 • Registered overseas construction license - Ministry of Construction and Transportation (civil engineering)
  - Registered overseas construction license (order-receiving license of overseas construction and development)
- 2007.07.06 • Established MDA E&C Co.,Ltd
- 2008.11.27 • Established MDA Electronics
- 2009.09.22 • Established SANVIHA Co.,Ltd
- 2010.01.21 • Acquired license of stone mining development (SANVIHA Co.,Ltd)
- 2012.05.22 • Obtained ISO certificate
- 2012.08.29 • Signed new contract with 2nd stone mining
- 2014.03.12 • Established MBICO VINA Co.,Ltd
- 2015.05.28 • Open Ho Chi Minh Office
- 2015.06.18 • Established KC&S (Ha Tinh)
- 2015.06.30 • Established S&G (Bac Giang)
- 2016.11.25 • Open Da Nang Branch office
- 2019.12.26 • Established MDA Laos Co.,Ltd
- 2020.05.29 • Established Myanmar MDA Co.,Ltd
- 2020.11.19 • Established MDA E&C India Co.,Ltd

**2007**

**2009**

**2014**



Established  
MDA E&C Co., Ltd

Established  
SANVIHA Co., Ltd

Established  
MBICO Co., Ltd.

**2015**

**2019**

**2020**

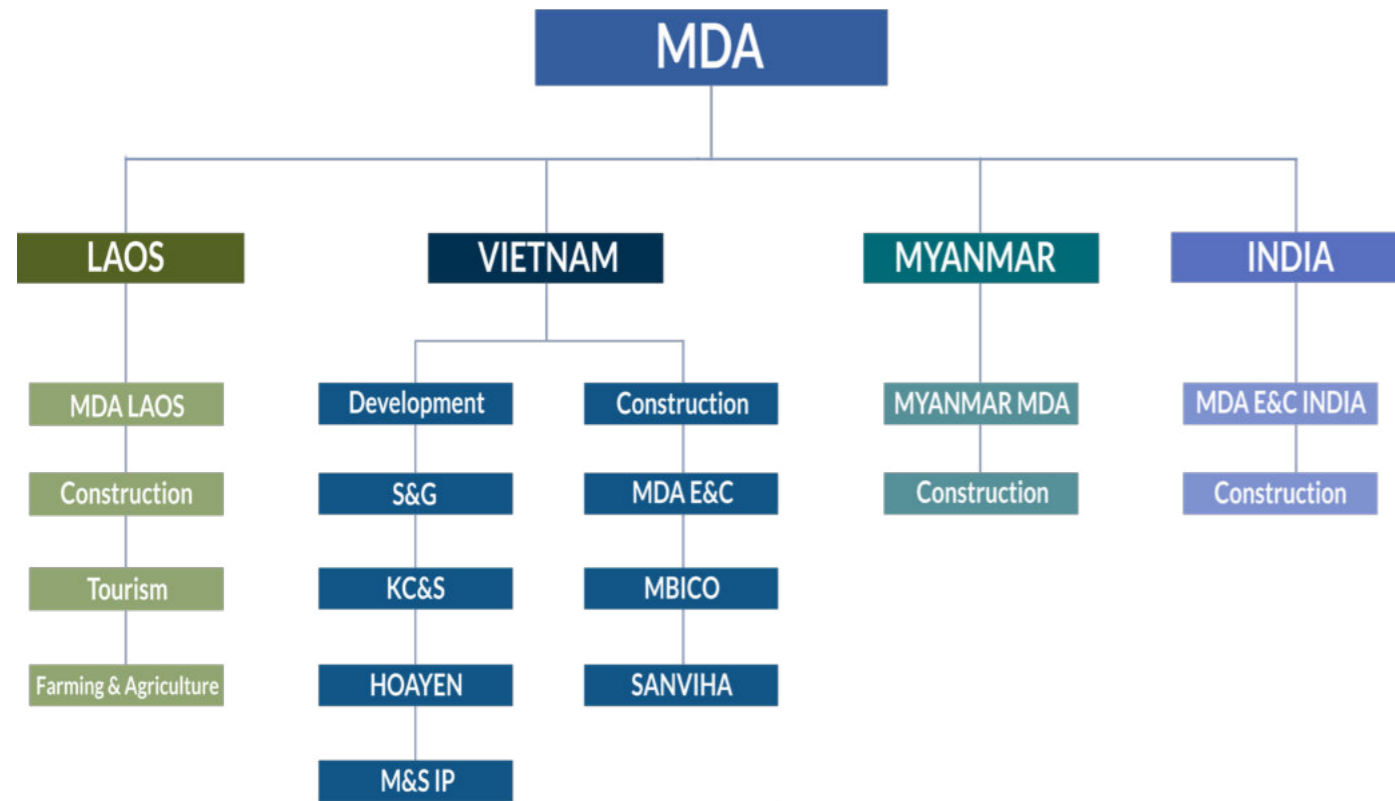


Established  
KC&S Co., Ltd &  
S&G Co., Ltd

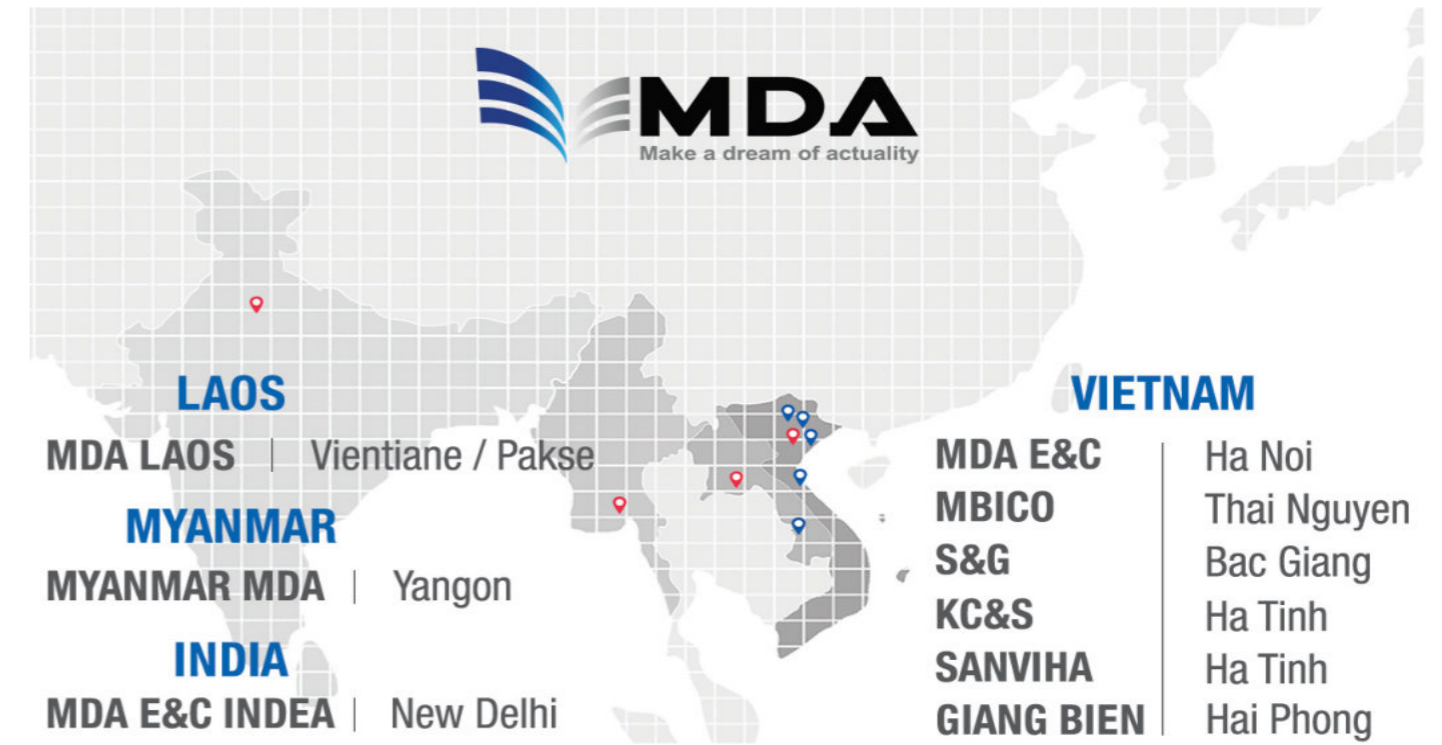
Established  
MDA Laos Co., Ltd

Established  
Myanmar MDA Co., Ltd  
& MDA E&C India Co., Ltd

# Organization



## Management System



### MDA E&C

Head office is located in Hanoi

- 13F, Licogi 13 toewr, Khuat duy tien road, Nhan chinh ward, Thanh xuan district, Ha Noi

### MBICO VINA

- Lot B, Song cong 1 Industrial park, Song cong city, Thai Nguyen Prvince

### SANVIHA VINA

- Hamlet 10, Ky tinh ward, Ky anh commune, Ha Tinh province

### S&G

- Van Trung2 Industrial Zone, Bac Giang Province

### KC&S

- Ky lien waed, Ky anh town, Ha Tinh province

### GIANG BIEN

- Giang Bien, Vinh Bao, Hai Phong

### MDA LAOS

Branch is located in Laos

- #22, Nongbone Village, Unit #136 Nongbone road, Saysettha District, Vientiane Lao P.D.R.

### MYANMAR MDA

Branch is located in Myanmar

- No.878-B, Byamasoe road, 4 ward, South Okklappa T/S, Yangon

### MDA E&C INDIA

Branch is located in India

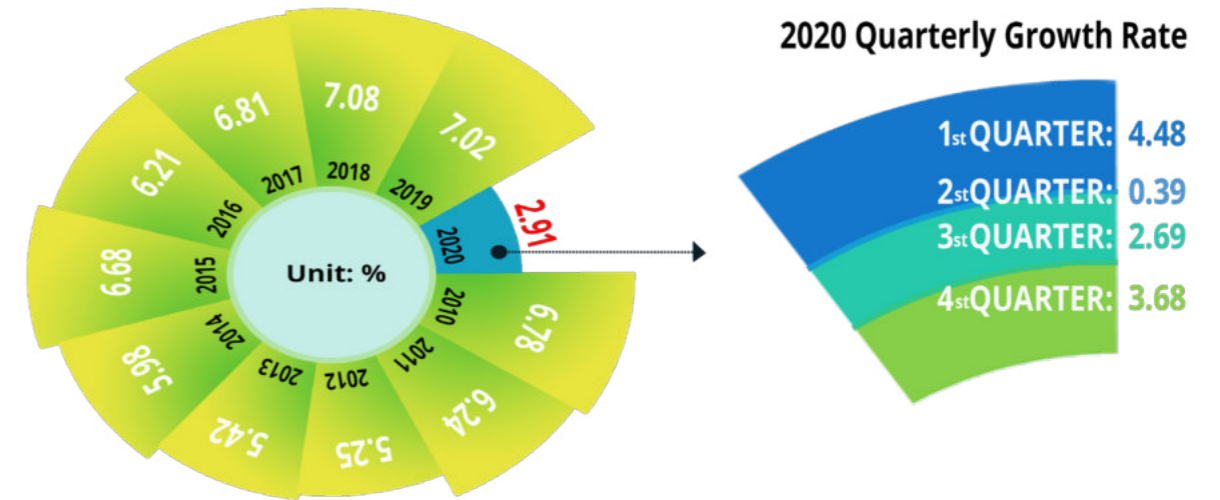
- NO. C-345, XU2, GREATER NOIDA, GAUTAM BUDH NAGAR NOIDA Gautam Buddha Nagar UP 201310 IN

# DEVELOPMENT

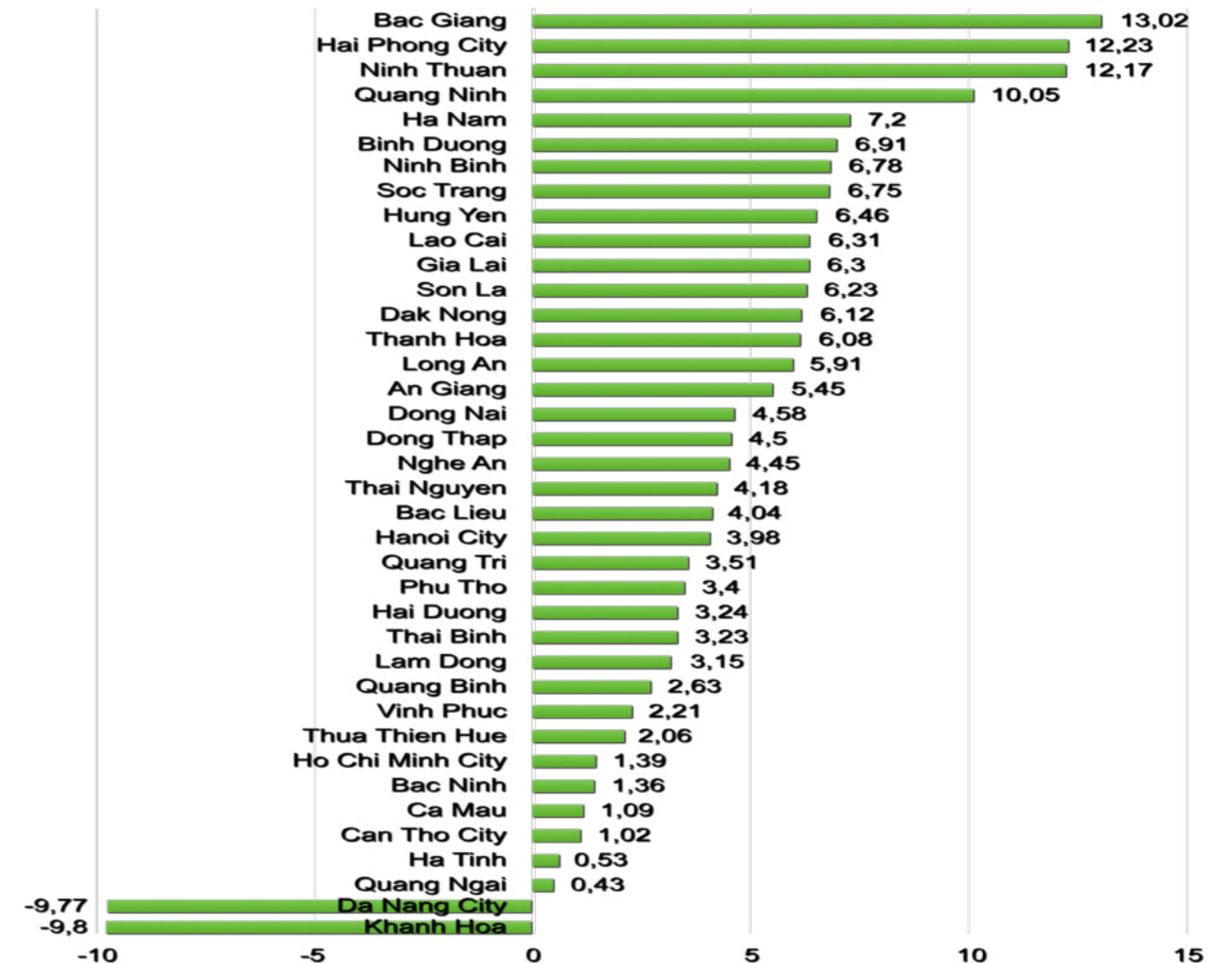


## Vietnam's Economy

### Vietnam GDP Growth Rate (%)



### Vietnam GRDP Growth Rate (%)



# S&G (VAN TRUNG 2)



§ VAN TRUNG 2 Bird's Eye View Completed Development and Sales

## Development & Sales of VAN TRUNG 2 Industrial Park

Size : 1,125,000m<sup>2</sup>

Project Cost : Approximately \$69 million

- We have developed and sold VAN TRUNG 2 industrial park, with the size of 1,125,000 m<sup>2</sup>, in Bac Giang Province (approximately 50 kilometers from downtown Hanoi).
- We have built an industrial park with a modern infrastructure of about 1,000,000 m<sup>2</sup> and a tool mall of about 20,000 m<sup>2</sup> and completed the sales.



KC&S



§ DREAM CITY Bird's Eye View

## Development of mini New Town in Ha Tinh Province

Size : 54,000m<sup>2</sup>

Project Cost : Approximately \$150 million

- We are developing a mini new town called Dream City, which houses 54,000 m2 four-star hotels, shopping malls, villas and apartments on the site of the new town of Vung Ang Special Economic Zone in Hà Tĩnh Province, Vietnam.



# GIANG BIEN



## Development of Provincial and National Industrial Park

Size : 4,000,000m<sup>2</sup>

Project Cost : Approximately \$290 million

- National industrial park approved by the Vietnamese prime minister on February 1, 2008 in Haiphong, northern Vietnam.
- We are developing Giang Bien 2 industrial park of 4,000,000 m<sup>2</sup> with local industrial park of 500,000 m<sup>2</sup> and national industrial park of 3,500,000 m<sup>2</sup>.



§ GIANG BIEN 2 Industrial Park Bird's Eye View

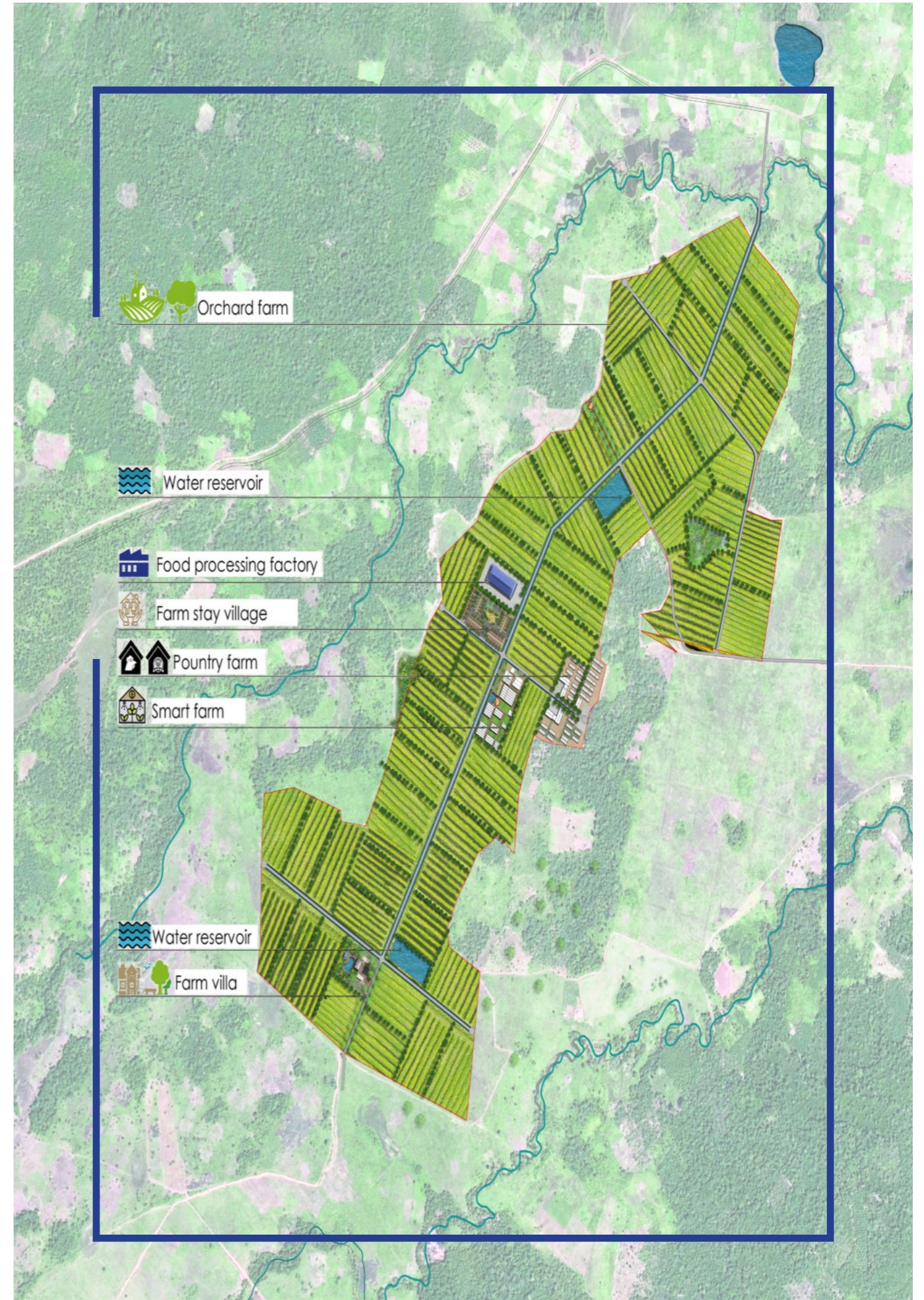
# MDA LAOS

## MDA Laos Holding Corporation

MDA Laos Co., Ltd is a holding corporation launched in Laos in 2019.

Through the development and operation of large-scale farms, We are working hard to improve the lives of farmers. MDA business in Laos consists of a total of four areas.

- Farm Corporation (Paksong) : Macadamia & Avocado farm, Smart farm.
- Tour Corporation (Paksong) : Development of theme trip and tourism.
- Distribution Corporation (all over Laos) : Animal and livestock products quarantine, cleaning, processing, packaging, distribution center.
- General construction corporation (all over Laos) : Real estate development and general construction.



§ MDA LAOS Paksong Farm Bird's Eye View

# Major Performance of Development

## Van Trung 2 Industrial Park - New Project

- Location : Van Trung Bac Giang
- Land Area : 1,125,000m<sup>2</sup>



## 1000 Sports Park

- Location : Thai Nguyen
- Golf Course : 990,000m<sup>2</sup>

## Giang Bien Industrial Park - New Project

- Location : Giang Bien Hai Phong
- Land Area : 4,000,000m<sup>2</sup>



## 1000 EcoTourism & Artist Village

- Location : Thai Nguyen
- Villa : 120,000m<sup>2</sup>
- Tourism Farm : 270,000m<sup>2</sup>

## Tool Shop

- Location : Van Trung Bac Giang
- Land Area : 14,409m<sup>2</sup>
- Total Floor Area : 22,306m<sup>2</sup>



## 1000 Complex Center

- Location : Hanoi
- Land Area : 39,460m<sup>2</sup>
- Usage : Complex Building  
Golf Driving Range  
Shop House  
Container Shop



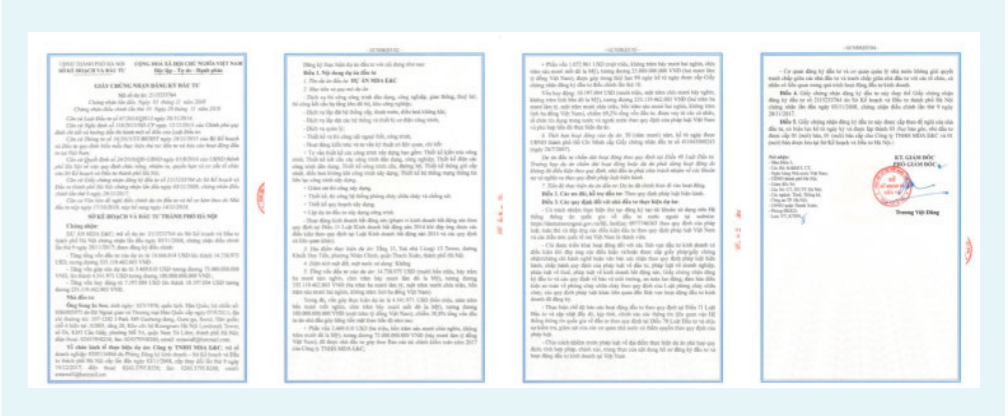
# CONSTRUCTION



## Certificate

### IRC : Investment Registration Certificate

- No. 2115233764
- Nov. 03, 2008



### ERC : Enterprise Registration Certificate

- No. 0305116866
- Nov. 03, 2008



### Certificate of Eligibility for Construction Ability

- No. BXD-00004878
- Nov. 03, 2008



### ISO 9001

- No. 181212.QMS.CN18
- 03/01/2019



### ISO 14001

- No. 181212.EMS.CN18
- 03/01/2019



### Credit Evaluation

- BIDV : AA
- MB : AA
- VIETCOM : AA+
- D&B (NICE) : 4A2





## General Construction

Achievement of the Best Quality and Follow-up Management of Buildings.

- From high-tech industrial facilities and public institutions to medical, educational, residential and cultural facilities.
- MDA builds creative space with infinite imagination, based on dreams, happiness and future.



## Construction Supervision

Best Quality Guaranteed with Experts in Every Field and On-Site construction and Safety Management.

- MDA talents with excellent experiences at home and abroad design buildings that go beyond the owner’s requirements through thorough research and good communication with the owner at every step of the design.



## Architectural & Structural Design

Providing the space design to satisfy users through total service and 3D modeling of the best quality in all areas, including architectural design and licensing.

- MDA’s design team with diverse experience and know-how to successfully carry out large projects in Korea and Vietnam consists of professional architects in subdivided fields such as business facilities, industrial facilities, residential facilities, and various cultural facilities.



## True Partnership & Shared Growth

MDA E&C has the highest construction performance of factory buildings in Vietnam & Total Solution

- Stable early operation support system as a partner to help companies enter Vietnam.
- Provision of Turnkey from factory establishment license to design, construction and completion permit.



# MBICO



## M&E professional / maintenance management

Mechanical equipment, electrical design, power solutions and construction maintenance management.

### 'Achievement of the Best Quality and Follow-up Management of Buildings'

- MBICO was founded in 2014 in Thai Nguyen to manage mechanical equipment, electrical design, power solutions and construction maintenance.
- To date, we have installed M & E system for construction projects of renowned plants such as Hanwha Aero Engine, Samju Vina Plant and ACE Antenna Plant.
- MBICO aims to provide value to every customer by anticipating and responding to every customer's needs and problems.



# Major Performance of Construction

## Flexcom Factory - New Project

- Location : Yen Phong IP  
Bac Ninh
- Period : Jun. 2008 ~ May 2009
- Land Area : 33,000m<sup>2</sup>
- Total Floor Area : 17,322m<sup>2</sup>



## U.I.T Factory - New Project

- Location : Yen Phong IP  
Bac Ninh
- Period : Mar. 2010 ~ Jul. 2010
- Land Area : 16,800m<sup>2</sup>
- Total Floor Area : 7,021m<sup>2</sup>

## P&Tel Factory - New Project

- Location : Yen Phong IP  
Bac Ninh
- Period : May 2010 ~ Sep. 2010
- Land Area : 35,000m<sup>2</sup>
- Total Floor Area : 18,615m<sup>2</sup>



## Crucial Tec Factory - New Project

- Location : Yen Phong IP  
Bac Ninh
- Period : Oct. 2010 ~ Jul. 2011
- Land Area : 26,467m<sup>2</sup>
- Total Floor Area : 17,950m<sup>2</sup>

## Elentec Factory - New Project

- Location : Quang Minh IP  
Ha Noi
- Period : Oct. 2010 ~ Mar. 2011
- Land Area : 19,134m<sup>2</sup>
- Total Floor Area : 7,215m<sup>2</sup>



## Haesung Vina Factory - New Project

- Location : Khai Quang IP  
Vinh Phuc
- Period : Mar. 2011 ~ Jul. 2011
- Land Area : 14,000m<sup>2</sup>
- Total Floor Area : 4,650m<sup>2</sup>

## Intops Factory - New Project

- Location : Yen Phong 1 IP  
Bac Ninh
- Period : Mar. 2010 ~ Aug. 2010
- Land Area : 39,566m<sup>2</sup>
- Total Floor Area : 21,365m<sup>2</sup>



## RF Tech Factory - New Project

- Location : VSIP IP  
Bac Ninh
- Period : Oct. 2011 ~ Apr. 2012
- Land Area : 13,987m<sup>2</sup>
- Total Floor Area : 11,750m<sup>2</sup>

**BH ITT Factory**  
- New Project

- Location : Khai Quang IP  
Vinh Phuc
- Period : May 2011 ~ Dec. 2011
- Land Area : 33,149m<sup>2</sup>
- Total Floor Area : 12,228m<sup>2</sup>



**Manduk School**  
- New Project

- Location : Van Phu  
Phu Tho
- Period : Jun. 2011 ~ Apr. 2011
- Land Area : 12,921m<sup>2</sup>
- Total Floor Area : 1,810m<sup>2</sup>



**Elentec Factory**  
- Phase 2

- Location : Quang Minh IP  
Ha Noi
- Period : May 2012 ~ Aug. 2012
- Land Area : 23,350m<sup>2</sup>
- Total Floor Area : 8,977m<sup>2</sup>



**KPF Vina Factory**  
- New Project

- Location : Dai An IP  
Hai Duong
- Period : Aug. 2011 ~ May 2012
- Land Area : 67,000m<sup>2</sup>
- Total Floor Area : 19,918m<sup>2</sup>



**Hyundai Domitory**  
- New Project

- Location : Quang Ninh
- Period : Oct. 2011 ~ Mar. 2012
- Total Floor Area : 3,310m<sup>2</sup>



**Samsung Office**  
- New Project

- Location : Thai Nguyen
- Period : Apr. 2012 ~ Aug. 2012
- Land Area : 12,011m<sup>2</sup>
- Total Floor Area : 3,795m<sup>2</sup>



**Flexcom Factory**  
- Phase 2

- Location : Dong Tho IP  
Bac Ninh
- Period : Jan. 2013 ~ Oct. 2013
- Land Area : 32,000m<sup>2</sup>
- Total Floor Area : 28,131m<sup>2</sup>



**Hoang Mai Apartment**  
- New Project

- Location : Hoang Mai  
Ha Noi
- Land Area : 78,276m<sup>2</sup>
- Total Floor Area : 283,422m<sup>2</sup>

**Van Tri New Urban  
- New Project**

- Location : Dong Anh Dist  
Ha Noi
- Land Area : 228,000m<sup>2</sup>
- Total Floor Area : 3,383m<sup>2</sup>



**Dream Hotel  
- New Project**

- Location : Ky Anh  
Ha Tinh
- Period : Mar. 2013 ~ On going



**BH Flex Factory  
- New Project**

- Location : Khai Quang IP  
Vinh Phuc
- Period : Oct. 2013 ~ Sep. 2014
- Land Area : 13,117m<sup>2</sup>
- Total Floor Area : 3,048m<sup>2</sup>



**UJU Vina Factory  
- New Project**

- Location : Khai Quang IP  
Vinh Phuc
- Period : Jul. 2013 ~ Jul. 2014
- Land Area : 33,149m<sup>2</sup>
- Total Floor Area : 13,038m<sup>2</sup>



**SG Hitech Factory  
- New Project**

- Location : Que Vo IP  
Bac Ninh
- Period : Jan. 2014 ~ Jun. 2014
- Land Area : 15,120m<sup>2</sup>
- Total Floor Area : 7,185m<sup>2</sup>



**Daehyun ST Vina Factory  
- New Project**

- Location : Ba Thien 2 IP  
Vinh Phuc
- Period : Feb. 2014 ~ Sep. 2014
- Land Area : 15,690m<sup>2</sup>
- Total Floor Area : 3,982m<sup>2</sup>



**Mobase Factory  
- New Project**

- Location : Yen Phong IP  
Bac Ninh
- Period : Feb. 2014 ~ Sep. 2014
- Land Area : 32,490m<sup>2</sup>
- Total Floor Area : 14,490m<sup>2</sup>



**Samju Vina Factory  
- New Project**

- Location : Diem Thuy IP  
Thai Nguyen
- Period : Feb. 2014 ~ Sep. 2014
- Land Area : 20,000m<sup>2</sup>
- Total Floor Area : 6,348m<sup>2</sup>



**DYT Factory**  
- New Project

- Location : Van Trung IP  
Bac Giang
- Period : Oct. 2014 ~ Jul. 2015
- Land Area : 39,996m<sup>2</sup>
- Total Floor Area : 7,914m<sup>2</sup>



**Sekonix Factory**  
- New Project

- Location : Ba Thien 2 IP  
Vinh Phuc
- Period : Nov. 2014 ~ Jul. 2015
- Land Area : 35,348m<sup>2</sup>
- Total Floor Area : 10,064m<sup>2</sup>



**Intops Factory**  
- Phase 3

- Location : Yen Phong IP  
Bac Ninh
- Period : Mar. 2015 ~ Dec. 2015
- Land Area : 40,000m<sup>2</sup>
- Total Floor Area : 14,706m<sup>2</sup>



**RF Tech Factory**  
- New Project

- Location : Diem Thuy IP  
Thai Nguyen
- Period : Mar. 2015 ~ Dec. 2015
- Land Area : 34,582m<sup>2</sup>
- Total Floor Area : 19,638m<sup>2</sup>



**Nguyen Son Bakery Factory**  
- Architectural Design

- Location : Yen Phong IP  
Bac Ninh
- Period : Jul. 2015
- Land Area : 8,919m<sup>2</sup>
- Total Floor Area : 4,791m<sup>2</sup>



**KET Factory**  
- New Project

- Location : Diem Thuy IP  
Thai Nguyen
- Period : Jul. 2015 ~ Sep. 2016
- Land Area : 9,960m<sup>2</sup>
- Total Floor Area : 4,126m<sup>2</sup>



**Dream City**  
- New Project

- Location : Ky Anh  
Ha Tinh
- Period : Jul. 2015 ~ On going
- Land Area : 50,000m<sup>2</sup>
- Total Floor Area : 177,187m<sup>2</sup>

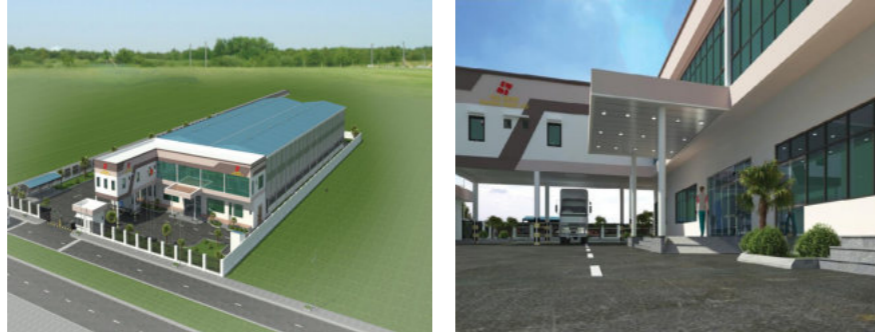


**ACE Technology Factory**  
- New Project

- Location : Dong Van 2 IP  
Ha Nam
- Period : Jul. 2015 ~ Jul. 2016
- Land Area : 126,740m<sup>2</sup>
- Total Floor Area : 60,894m<sup>2</sup>

**Chulwoo Vina Factory**  
- New Project

- Location : Song Khe Noi Hoang IP  
Bac Giang
- Period : Nov. 2015 ~ Mar. 2016
- Land Area : 9,900m<sup>2</sup>
- Total Floor Area : 5,964m<sup>2</sup>



**Inzi Vina Factory**  
- New Project

- Location : Amata IP  
Dong Nai
- Period : Nov. 2015 ~ Jul. 2016
- Land Area : 37,262m<sup>2</sup>
- Total Floor Area : 25,767m<sup>2</sup>



**Pavonine Vina Factory**  
- New Project

- Location : My Xuan B1 IP  
Vung Tau
- Period : May 2016 ~ Jul. 2017
- Land Area : 24,209m<sup>2</sup>
- Total Floor Area : 9,398m<sup>2</sup>



**Platel Vina Factory**  
- New Project

- Location : Saigon Hitech IP  
Ho Chi Minh
- Period : Feb. 2016 ~ Aug. 2016
- Land Area : 41,300m<sup>2</sup>
- Total Floor Area : 18,973m<sup>2</sup>



**Daihan Vina Factory**  
- New Project

- Location : Saigon Hitech IP  
Ho Chi Minh
- Period : Aug. 2016 ~ May 2017
- Land Area : 20,300m<sup>2</sup>
- Total Floor Area : 8,979m<sup>2</sup>



**New Hanam Factory**  
- New Project

- Location : Saigon Hitech IP  
Ho Chi Minh
- Period : Aug. 2016 ~ May 2017
- Land Area : 30,080m<sup>2</sup>
- Total Floor Area : 12,616m<sup>2</sup>



**Samju Vina Factory**  
- Phase 2

- Location : Diem Thuy IP  
Thai Nguyen
- Period : Dec. 2016 ~ Aug. 2017
- Land Area : 20,000m<sup>2</sup>
- Total Floor Area : 10,971m<sup>2</sup>



**RF Tech Factory**  
- Phase 2

- Location : Diem Thuy IP  
Thai Nguyen
- Period : Sep. 2016 ~ Mar. 2017
- Land Area : 34,582m<sup>2</sup>
- Total Floor Area : 6,316m<sup>2</sup>



**Hanwha Aeroengines Factory  
- New Project**

- Location : Hoa Lac IP  
Ha Noi
- Period : Jul. 2017 ~ Jul. 2018
- Land Area : 96,789m<sup>2</sup>
- Total Floor Area : 67,903m<sup>2</sup>



**ACE Technology Factory  
- Phase 2**

- Location : Dong Van 2 IP  
Ha Nam
- Period : Nov. 2017 ~ May 2018
- Land Area : 126,740m<sup>2</sup>
- Total Floor Area : 52,655m<sup>2</sup>



**Samkwang Vina Factory  
- New Project**

- Location : Quang Chau IP  
Bac Giang
- Period : Jun. 2018 ~ Sep. 2018
- Land Area : 100,000m<sup>2</sup>
- Total Floor Area : 36,752m<sup>2</sup>



**KMW Factory  
- New Project**

- Location : Dong Van 1 IP  
Ha Nam
- Period : Nov. 2017 ~ May 2018
- Land Area : 90,086m<sup>2</sup>
- Total Floor Area : 29,581m<sup>2</sup>



**Intops Factory  
- Phase 4**

- Location : Yen Phong 1 IP  
Bac Ninh
- Period : Sep. 2018 ~ Feb. 2019
- Land Area : 22,250m<sup>2</sup>
- Total Floor Area : 8,043m<sup>2</sup>



**Korea Embassy Building  
- New Project**

- Location : Do Nhuan  
Hanoi
- Period : Jan. 2019 ~ Jun. 2019



**Moda Innochips Vina Factory  
- New Project**

- Location : Phu Ha IP  
Phu Tho
- Period : Jan. 2019 ~ Sep. 2019
- Land Area : 50,888m<sup>2</sup>
- Total Floor Area : 15,405m<sup>2</sup>



**Hanwha Aeroengines Factory  
- Phase 2**

- Location : Hoa Lac IP  
Ha Noi
- Period : Sep. 2019 ~ Jul. 2020
- Land Area : 96,789m<sup>2</sup>
- Total Floor Area : 17,419m<sup>2</sup>



**Young Die Casting Factory  
- New Project**

- Location : Diem Thuy IP  
Thai Nguyen
- Period : Oct. 2019 ~ Mar. 2020
- Land Area : 22,252m<sup>2</sup>
- Total Floor Area : 10,701m<sup>2</sup>



**RF Tech Factory  
- Phase 5**

- Location : Yen Binh IP  
Thai Nguyen
- Period : Dec. 2019 ~ May 2020
- Land Area : 40,561m<sup>2</sup>
- Total Floor Area : 10,314m<sup>2</sup>



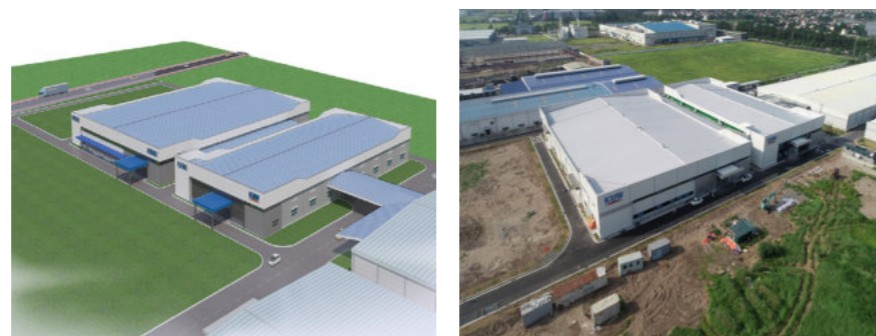
**Samju Vina Factory  
- Phase 4**

- Location : Diem Thuy IP  
Thai Nguyen
- Period : Jan. 2020 ~ Apr. 2020
- Land Area : 20,000m<sup>2</sup>
- Total Floor Area : 5,859m<sup>2</sup>



**KMW Factory  
- Phase 3**

- Location : Dong Van 1 IP  
Ha Nam
- Period : Dec. 2019 ~ May 2020
- Land Area : 90,086m<sup>2</sup>
- Total Floor Area : 9,449m<sup>2</sup>



**Sky Bridge Factory  
- New Project**

- Location : Diem Thuy IP  
Thai Nguyen
- Period : Feb. 2020 ~ Nov. 2020
- Land Area : 80,000m<sup>2</sup>
- Total Floor Area : 13,458m<sup>2</sup>



**Samkwang Vina Factory  
- Phase 2**

- Location : Quang Chau IP  
Bac Giang
- Period : Feb. 2020 ~ Nov. 2020
- Land Area : 100,000m<sup>2</sup>
- Total Floor Area : 18,086m<sup>2</sup>



**Iijin Diamond Factory  
- New Project**

- Location : Dong Van 4 IP  
Ha Nam
- Period : May 2020 ~ Dec. 2020
- Land Area : 30,000m<sup>2</sup>
- Total Floor Area : 14,133m<sup>2</sup>



# MDA E&C 3-years Performance (2018~2020)

Year	Project name	Client	Location
2018	SAMKWANG FACTORY	SAMKWANG VINA	Quang Chau IP, Bac Giang
	ACE ANTENNA FACTORY (PHASE 2)	ACE ANTENNA	Dong Van 2 IP, Ha Nam
	INTOPS FACTORY (PHASE 4)	INTOPS VIET NAM	Yen Phong 1 IP, Bac Ninh
	RF TECH FACTORY	RFTECH THAI NGUYEN	Diem Thuy IP, Thai Nguyen
	HANWHA AERO ENGINES FACTORY (PHASE 1)	HANWHA AERO ENGINES	Hoa Lac IP, Hanoi
	KMW FACTORY (PHASE 1)	KMW VIETNAM	Diem Thuy IP, Thai Nguyen
	SAMJU FACTORY (PHASE 4)	SAMJU VINA	Diem Thuy IP, Thai Nguyen
	SUNG CHANG	SUNGCHANG VINA	Van Trung 1 IP, Bac Giang
	UNIEL FLEX	UNIEL FLEX	Binh Xuyen 2 IP, Vinh Phuc
	VAN TRUNG 2 IP	S&G JSC	Van Trung 2 IP, Bac Giang
2019	INTOPS FACTORY (PHASE 4)	INTOPS VIET NAM BIKESHED	Yen Phong 1 IP, Bac Ninh
	KOREA EMBASSY	SAMHWAN	Hanoi
	INNOCHIPS FACTORY	INNOCHIPS	Phu Ha IP, Phu Tho
	SAMKWANG FACTORY	SAMKWANG VINA	Quang Chau IP, Bac Giang
	RFTECH FACTORY (PHASE 5)	RFTECH THAI NGUYEN	Yen Binh IP, Thai Nguyen
	SJ TECH FACTORY	SJTECH	Van Trung 2 IP, Bac Giang
	HANWHA AERO ENGINES FACTORY (PHASE 2)	HANWHA AERO ENGINES	Hoa Lac IP, Hanoi
	SAMJU FACTORY (PHASE 4)	SAMJU VINA	Diem Thuy IP, Thai Nguyen
	ASEA DAERYUN	ASEA DAERYUN VINA	Diem Thuy IP, Thai Nguyen
	KPF VINA	KPF VINA	Dai An IP, Hai Duong
	HANA MICRON	ELECTRIC WORK	Van Trung 2 IP, Bac Giang
	YOUNG D/C FACTORY	YOUNG DIECASTING VINA	Diem Thuy IP, Thai Nguyen
2020	KMW FACTORY (PHASE 3)	KMW	Diem Thuy IP, Thai Nguyen
	SAMJU FACTORY (PHASE 4)	SAMJU VINA	Diem Thuy IP, Thai Nguyen
	SAMKWANG FACTORY (PHASE 2)	SAMKWANG VINA	Quang Chau IP, Bac Giang
	INTOPS Thai Nguyen	INTOPS	Yen Binh IP, Thai Nguyen
	HANWHA AERO ENGINES FACTORY (PHASE 2)	HANWHA AERO ENGINES	Hoa Lac IP, Hanoi
	ILJIN FACTORY	ILJIN VINA	Dong Van 4 IP, Ha Nam
	SEBANG VINA Logistic Center	SEBANG VINA	Pho Noi B IP, Hung Yen
	YOUNG D/C FACTORY (Hookup)	YOUNG DIECASTING VINA	Diem Thuy IP, Thai Nguyen
	HYOSUNG FACTORY	HYOSUNG	Yen Phong 2 IP, Bac Ninh
	HJ FACTORY	HJ VINA	VSIP IP, Bac Ninh
MAGTRON	MAGTRON VINA	Van Trung IP, Bac Giang	

Area (m2)		Work scope	Construction period From ~ To (Month)
Land area	Total floor area		
100,000	36,752	CONSTRUCTION+M&E+DESIGN	2018.06 - 2018.08
12,000	3,000	CONSTRUCTION+M&E	2018.08 - 2018.09
22,250	8,043	CONSTRUCTION+M&E+DESIGN	2018.03 - 2019.07
1,000	320	CONSTRUCTION+M&E	2018.08 - 2018.12
96,789	67,903	CONSTRUCTION+M&E+DESIGN	2018.03 - 2018.12
90,086	29,581	CONSTRUCTION+M&E	2018.04 - 2019.06
20,000	2,521	CONSTRUCTION+M&E+DESIGN	2018.06 - 2018.11
		CONSULTANCY	
		DESIGN	2018.01 - 2019.03
		CONSTRUCTION+M&E+DESIGN	2018.01 - 2019.03
22,250	9,064	CONSTRUCTION	2019.01 - 2019.05
	2,300	CONSTRUCTION+M&E+DESIGN	2019.01 - 2019.06
50,888	15,405	CONSTRUCTION+M&E+DESIGN	2019.03 - 2019.09
100,000	4,910	RENOVATION	2019.01 - 2019.05
40,561	10,314	CONSTRUCTION	2019.05 - 2019.12
	1,211	CONSTRUCTION	2019.03 - 2019.04
96,789	17,419	CONSTRUCTION+M&E+DESIGN	2019.09 - 2020.07
20,000	5,859	CONSTRUCTION	2019.08 - 2019.08
	8,000	DESIGN	2019.01 - 2019.02
	29,959	DESIGN	2019.01 - 2019.03
		M&E	2019.12 - 2020.5
22,252	10,701	CONSTRUCTION+M&E+DESIGN	2019.01 - 2019.02
90,086	9,449	CONSTRUCTION+M&E+DESIGN	2019.12 - 2020.05
20,000	5,859	CONSTRUCTION+M&E+DESIGN	2020.01 - 2020.04
100,000	18,086	CONSTRUCTION+M&E+DESIGN	2020.02 - 2020.05
80,000	13,458	CONSTRUCTION+M&E+DESIGN	2020.012 - 2020.03
96,789	17,419	CONSTRUCTION+M&E	2020.02 - 2020.06
30,000	14,133	CONSTRUCTION+M&E	2020.05 - 2020.11
	8,712	CONSTRUCTION+M&E+DESIGN	2020.02 - 2020.12
		M&E	2020.08 - 2020.10
130,000	55,635	CONSTRUCTION+M&E	2020.11 - 2021.08
22,161	13,135	CONSTRUCTION+M&E	2020.11 - 2021.05
10,000	6,827	CONSTRUCTION+M&E	2020.11 - 2021.04

## CONTACT US

---

**E-mail** : [entawall@hanmail.net](mailto:entawall@hanmail.net)  
[ceo@mda.asia](mailto:ceo@mda.asia)  
[kylee@mda.asia](mailto:kylee@mda.asia)

**Office** : +84) 24-3795-8258

**Mobile** : +84) 93-632-7374  
+84) 81-670-2393

**Website** : [www.mda.asia](http://www.mda.asia)  
[www.mda.world](http://www.mda.world)

